

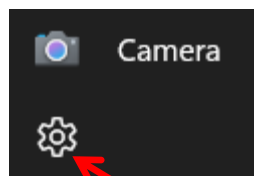
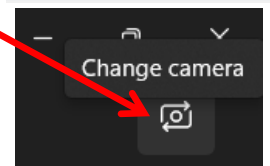
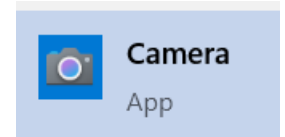
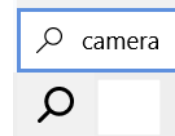
How to Connect Flexi-Scope to a Computer

There are two ways you can connect Flexi-Scope to your computer and capture what it sees.

I. You can use the built-in camera on your computer.

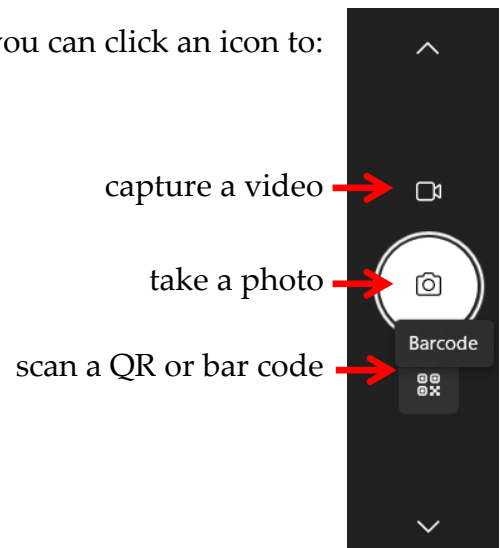
Windows computers have a nice camera that can shoot pictures, videos, and scan bar codes. To get to it, click the Search icon and type camera. Then choose the Camera app.

When the camera opens, it might be looking at you, as if you were in a Zoom meeting. To change the camera to Flexi-Scope, click the 'Change camera' icon at the upper right of the screen. Now it will be looking at Venus USB2.0 Camera, which is how it identifies Flexi-Scope.



At the upper left is a gear for Settings, where you can adjust Camera Settings, Photo Settings, Video Settings, and Related Settings.

At the right, you can click an icon to:



Pictures taken with the camera are stored in the My Documents>Camera Roll folder.

Macintosh computers also have a built-in camera. To get to it, go to System Settings>Appearance>Accessibility>Camera Options.

Click in Camera Options, then choose Venus USB2.0 Camera from the dropdown menu.

You can use Mac Photo Booth to view images and videos you take with Flexi-Scope. To open Photo Booth, click the Go menu, select Applications, and find Photo Booth in the Applications folder.

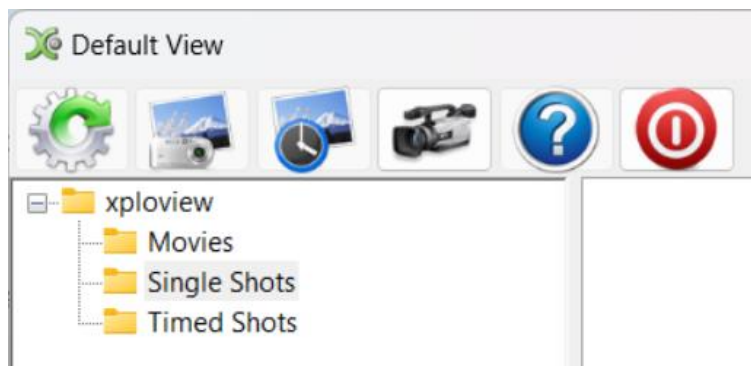
Chromebooks have a built-in camera, although you need a lot of light in the room to get a good image. It can do stills, videos, time lapse, and scan QR codes. The quality of the photos isn't as good as other options, however.

II. You can use Xplovview software.

Download Xplovview software for Windows or MacOS here: www.xplovview.com

This software will work if your computer already has a camera installed.

The main screen looks like this:



Click the Settings (gear) button change the camera to Flexi-Scope and adjust other settings.

Click the Camera button to take a picture.

Click the button with the Clock to take time lapse photos (every second or every 5 seconds).

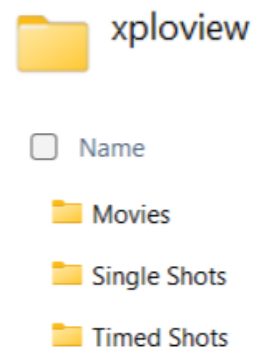
Click the Video Camera button to start or stop a video recording.

The ? is for Help, but it only shows information about the software version.

Click the red Power button to exit the program.

Click on one of the folder names—Movies, Single Shots, or Timed Shots—to view the images taken using those settings.

Files are saved in an Xplovview folder in My Documents, unless you have specified a different folder in the Settings area. They are organized by the type of image you took when using Flexi-Scope.



If you connect your computer to television or Smartboard to project the images, all students can see them at the same time. To connect your computer, you typically use an HDMI cable.